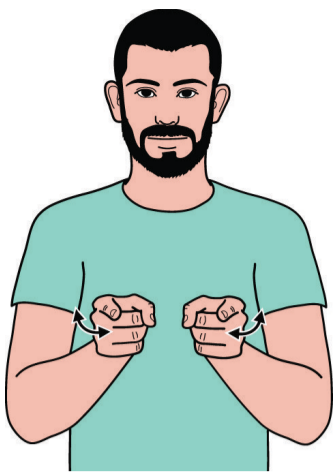


### STOP



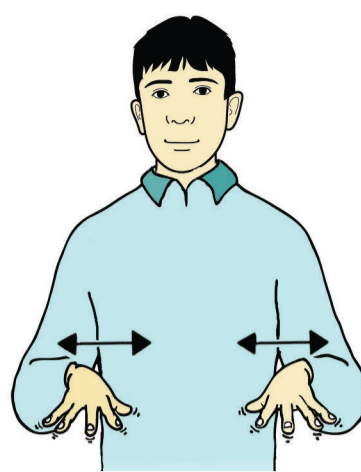
Working flat hand (palm forward, pointing up) is held in front of working side of body.

### MUSIC



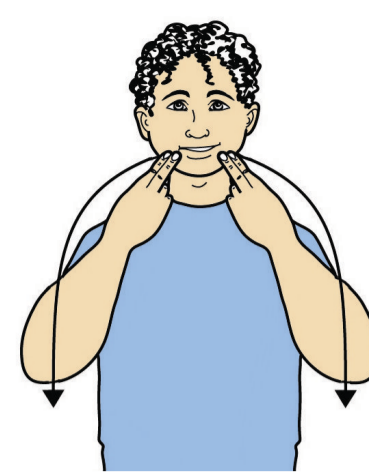
Index hands (palms in, pointing forward) make small outward then inward downward arcs, moving from wrists.

### PIANO



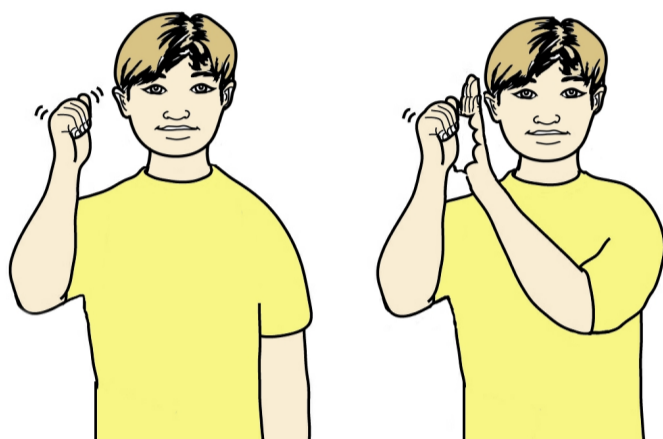
Relaxed open hands (palms down, pointing forward) move apart and together several times, fingers wiggling.

### SONG



"N" hands (palms back, pointing in/up) at sides of mouth, move forward/apart in downward arc, turning to palms up.

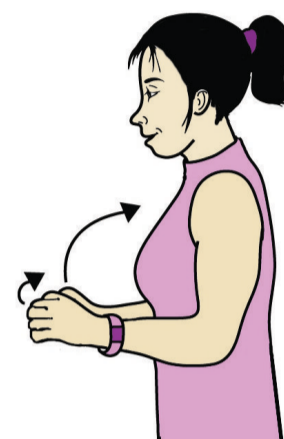
### TAMBOURINE



Working closed hand held up (palm in, pointing up) shakes and then strikes twice against flat supporting palm held up.

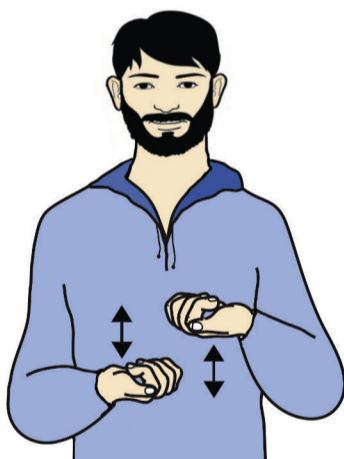


### SHAKER



Fists (palms in, pointing forward) twist to point up whilst moving back from elbows. Repeat.

### DRUM

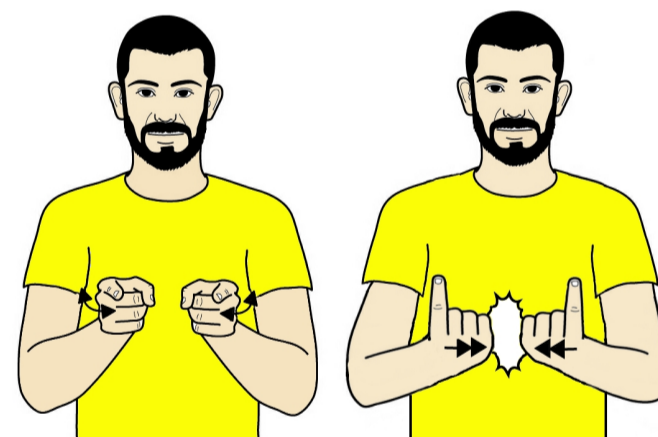


Closed hands (palms up, pointing forward/in) move up and down alternately.

# MUSIC



### TO PLAY



Index hands (palms in, pointing forward) make small outward then inward arcs moving from wrists; then index hands (palms forward, pointing up) circle in turning to palms back, pointing up and tap together twice.

© SIGNALONG

[www.signalong.org.uk](http://www.signalong.org.uk)

[info@signalong.org.uk](mailto:info@signalong.org.uk)

Signalong is a sign-supported system used to facilitate the comprehension of verbal information using an additional communication method, specifically signing. Signs are used in spoken English order and only key words are signed at the appropriate level.

Signalong training teaches additional information to help understand why signing may or may not be used, such as symbolic development and generalisation and has been established since 1991. It has a vocabulary of nearly 9,000 signs accessible in paper and digital format. The methodology ensures that signs are always interpreted and signed consistently and can be described over the phone or in an e-mail and correct interpretation is assured. Also signs specific to individuals, idiosyncratic signing, can be translated using this methodology to ensure consistent communication.

As Signalong is based on BSL, most vocabulary is signed in a similar way except where individuals have been confused by similarities for concepts e.g. doll/baby, cup/drink, bed/sleep and look/see are almost identical. Signalong have one sign per concept, one concept per sign. Also, other systems have some dialect differences which can cause confusion.